

SCRUMPTIOUS

by Fyberspates

Alyona

by Lynne Tuck, for Fyberspates

Just one skein of Scrumptious Lace silk and merino luxury yarn is used for this delicate scarf.





Alyona

Pattern notes

If you are new to knitting lace patterns, you may find it helpful to place stitch markers to show the pattern repeats. Suggested placement for the markers is given on the first pattern row. They are placed on each side of the repeat shown in brackets. These will help you to keep track of the pattern and to spot any mistakes before you have gone too far past the error.

The pattern is written out in full, as well as being shown on a chart.

Scarf

Using US size 8 needles, cast on 69 (111) sts loosely.

Knit 6 rows (garter stitch).

Now work in the following lace pattern, which is also shown on the chart.

Row 1 (RS): K3, pm, [K1, K2tog, yo, K1, yo, SSK, K8, pm] 4 (7) times, K1, K2tog, yo, K1, yo, SSK, K4.

Row 2 and all WS rows: K3, purl to last 3 sts, K3.

Row 3: K3, [K2tog, yo, K3, yo, SSK, K7] 4 (7) times, K2tog, yo, K3, yo, SSK, K3.

Row 5: K3, [K2, yo, Sl 1, K2tog, pssso, yo, K9] 4 (7) times, K2, yo, Sl 1, K2tog, pssso, yo, K5.

Row 7: K3, [K8, K2tog, yo, K1, yo, SSK, K1] 4 (7) times, K10.

Row 9: K3, [K7, K2tog, yo, K3, yo, SSK] 4 (7) times, K10.

Row 11: K3, [K9, yo, Sl 1, K2tog, pssso, yo, K2] 4 (7) times, K10.

Row 12: As row 2.

These 12 rows set lace pattern. Continue to work in lace pattern until piece measures 64½in [163cm], or desired length (longer scarves or shawls will require more yarn).

Knit 6 rows to create garter stitch edge. Bind off loosely.

Finishing

Weave in all ends, but do not trim. Soak the scarf/shawl in tepid water for at least 20 minutes. Squeeze gently to remove excess water, and pin out to measurements, stretching firmly to open up the lace pattern. Allow to dry fully, unpin and trim ends.

Size

Scarf size: Approx 14in x 65in [35cm x 165cm] relaxed, after blocking

Shawl size: Approx 21½in x 65in [55cm x 165cm] relaxed, after blocking

Yarn

Fyberspates Scrumptious Lace (45% silk, 55% merino; 100g skeins)

Gold (502) 1 x 100g skein both sizes

Needles and accessories

1 pair US size 8 [5mm/UK 6] knitting needles

Stitch markers (optional)

Gauge

20 sts and 23 rows to 4in [10cm] over lace pattern, relaxed after blocking (approximate measurement as the lace pattern is very stretchy when worked at this gauge)

Abbreviations

approx: Approximately

K: Knit

K2tog: Knit 2 stitches together

P: Purl

pm: Place stitch marker

Key

□ Knit on RS, Purl on WS

● Purl on RS, Knit on WS

◻ SSK

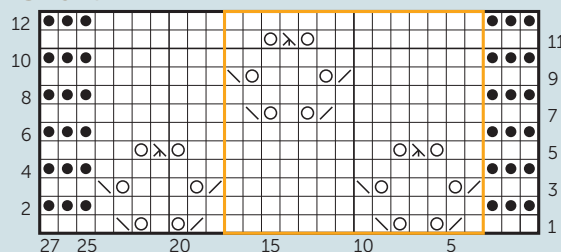
◻ K2tog

⊗ Sl 1, K2tog, pssso

○ Yarnover

□ Pattern repeat

Chart



pssso: Pass slipped stitch over

RS: Right side

Sl 1: Slip 1 stitch

SSK: Slip 2 stitches knitwise to the right hand needle, pass the left hand needle tip into the front of these 2 stitches and knit them together

st(s): Stitch(es)

WS: Wrong side

yo: Pass yarn over needle to create a false stitch, this will make a hole in the knitted fabric

Credits

Pattern Designer: Lynne Tuck, for Fyberspates Ltd
 Technical Editor: Jen Arnall-Culliford
 Photography: Amanda France
 Art and Production: Nic Blackmore

Copyright © 2011 Fyberspates Ltd
 All rights reserved.

The entire contents of this leaflet and the pattern therein are subject to copyright. The purchase of this pattern allows you to use it for personal non-commercial purposes. Items produced using the directions in this pattern are not licensed to be sold for profit.

US distributor of Fyberspates Scrumptious:



LANTERN MOON
 7911 NE 33rd Drive,
 Suite 140, Portland,
 OR 97211, USA
 Tel: 503 460 0003
 Tel: 800 530 4170

www.lanternmoon.com

In association with:



Fyberspates Ltd
 Lechlade, Gloucestershire,
 GL7 3RB, United Kingdom
 Tel: +44 (0)7540 656660

www.fyberspates.co.uk