

SCRUMPTIOUS

by Fyberspates

Eilwen

by Jeni Hewlett, for Fyberspates

Just one skein of Scrumptious Lace silk and merino luxury yarn is used for this delicate scarf.





Eilwen

Size

Approx 6in x 55in [15cm x 140cm], relaxed after blocking

Yarn

Fyberspates Scrumptious Lace (45% silk, 55% merino; 100g skeins)
Oyster (503) 1 x 100g skein

Needles and accessories

1 pair US size 4 [3.5mm/UK 10-9] knitting needles
Cable needle

Gauge

Very approximately 30 sts to 4in [10cm] over cable and lace pattern, gently stretched out (to mimic blocking)

Abbreviations

approx: Approximately

C4F: Slip 2 sts to cable needle and hold at front of work, K2; K2 from cable needle

DDEC: Slip 2 sts as if to K2tog, but don't knit them together, Knit the next stitch then pass the 2 slipped sts over. 2 sts decreased

K: Knit

K2tog: Knit two stitches together

KFB: Knit into front and back of same stitch. 1 st increased

P: Purl

RS: Right side

Sl: Slip

SSK: Slip 2 stitches knitwise separately to the right hand needle, put left hand needle through the front of the two slipped stitches and knit them together.

st(s): Stitch(es)

WS: Wrong side

yo: Yarnover

Pattern notes

The pattern is given in both written and charted form. Even if you don't normally work from charts, you may find that having started with the written pattern, the chart is a helpful *aide-memoire*, once you are more in the rhythm of the stitch pattern.

Please choose whether to follow the metric or imperial instructions, and use these throughout. The two sets of measurements give very marginally different finished lengths.

Scarf

INCREASE SECTION

Using US size 4 needles, cast on 2 sts.

Now work as follows from written instructions or using chart.

Row 1 (RS): KFB twice. 4 sts.

Row 2 (WS): Knit.

Row 3: KFB 4 times. 8 sts.

Row 4: K3, P2, K3.

Row 5: K3, yo, K2, yo, K3. 10 sts.

Row 6 and all foll WS rows: K3, purl to last 3 sts, K3.

Row 7: K3, yo, C4F, yo, K3. 12 sts.

Row 9: K3, yo, K6, yo, K3. 14 sts.

Row 11: K3, yo, K2tog, yo, C4F, yo, SSK, yo, K3. 16 sts.

Row 13: K3, yo, K1, K2tog, yo, K4, yo, SSK, K1, yo, K3. 18 sts.

Row 15: K3, yo, K1, yo, DDEC, yo, C4F, yo, DDEC, yo, K1, yo, K3. 20 sts.

Row 17: K3, yo, K2, yo, DDEC, yo, K4, yo, DDEC, yo, K2, yo, K3. 22 sts.

Row 19: K3, yo, K3, yo, DDEC, yo, C4F, yo, DDEC, yo, K3, yo, K3. 24 sts.

Row 21: K3, yo, *K4, yo, DDEC, yo; rep from * once, K4, yo, K3. 26 sts.

Row 23: K3, yo, K1, C4F, *yo, DDEC, yo, C4F; rep from * once, K1, yo, K3. 28 sts.

Row 25: K3, yo, K2tog, yo, *K4, yo, DDEC, yo; rep from * once more, K4, yo, SSK, yo, K3. 30 sts.

Row 27: K3, yo, K1, K2tog, yo, *C4F, yo, DDEC, yo; rep from * once more, C4F, yo, SSK, K1, yo, K3. 32 sts.

Row 29: K3, yo, K2, K2tog, yo, *K4, yo, DDEC, yo; rep from * once more, K4, yo, SSK, K2, yo, K3. 34 sts.

Row 31: K3, yo, K2, *yo, DDEC, yo, C4F; rep

from * twice more, yo, DDEC, yo, K2, yo, K3. 36 sts.

Row 33: K3, yo, K3, *yo, DDEC, yo, K4; rep from * twice more, yo, DDEC, yo, K3, yo, K3. 38 sts.

Row 35: K3, yo, *C4F, yo, DDEC, yo; rep from * 3 more times, C4F, yo, K3. 40 sts.

Row 37: K3, yo, K1, *K4, yo, DDEC, yo; rep from * 3 more times, K5, yo, K3. 42 sts.

Row 39: K3, yo, K2tog, yo, *C4F, yo, DDEC, yo; rep from * 3 more times, C4F, yo, SSK, yo, K3. 44 sts.

STRAIGHT SECTION

Row 41: K3, *yo, DDEC, yo, K4; rep from * 4 more times, yo, DDEC, yo, K3.

Row 42: K3, purl to last 3 sts, K3.

Row 43: K3, *yo, DDEC, yo, C4F; rep from * 4 more times, yo, DDEC, yo, K3.

Row 44: K3, purl to last 3 sts, K3.

Rows 41 to 44 set cable and lace pattern.

Continue to work in cable and lace pattern until scarf measures approx 51in [130cm] long when gently stretched out in both directions, ending with a row 44.

DECREASE SECTION

Row 45: K2, Sl 1, K2tog, psso, yo, K5, *yo, DDEC, yo, K4; rep from * 3 more times, K1, yo, K3tog, K2. 42 sts.

Row 47: K2, Sl 1, K2tog, psso, yo, *C4F, yo, DDEC, yo; rep from * 3 more times, C4F, yo, K3tog, K2. 40 sts.

Row 49: K2, Sl 1, K2tog, psso, yo, K3, *yo, DDEC, yo, K4; rep from * twice more, yo, DDEC, yo, K3, yo, K3tog, K2. 38 sts.

Row 51: K2, Sl 1, K2tog, psso, yo, K2, *yo, DDEC, yo, C4F; rep from * twice more, yo, DDEC, yo, K2, yo, K3tog, K2. 36 sts.

Row 53: K2, Sl 1, K2tog, psso, yo, K1, *yo, DDEC, yo, K4; rep from * twice more, yo, DDEC, yo, K1, yo, K3tog, K2. 34 sts.

Row 55: K2, Sl 1, K2tog, psso, yo, K1, SSK, yo, *C4F, yo, DDEC, yo; rep from * once more, C4F, yo, K2tog, K1, yo, K3tog, K2. 32 sts.

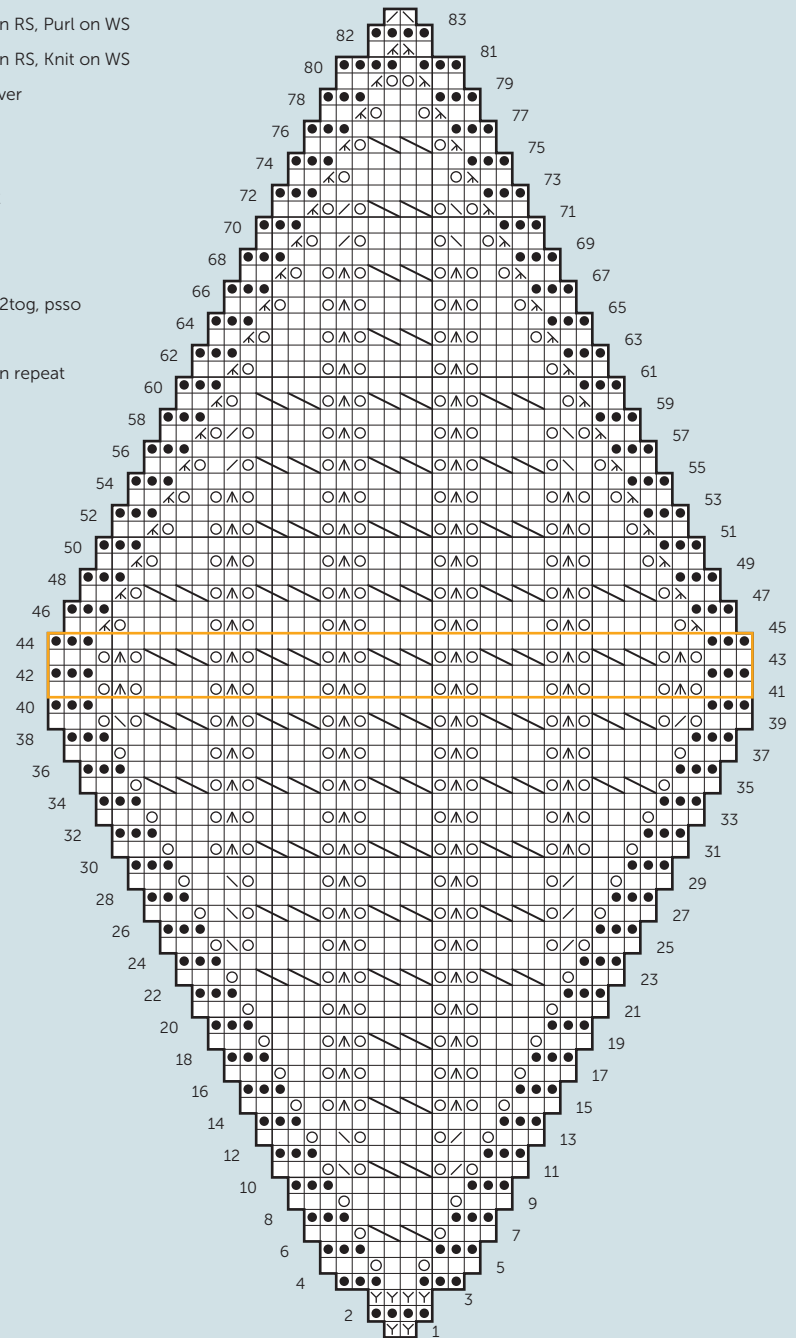
Row 57: K2, Sl 1, K2tog, psso, yo, SSK, yo, *K4, yo, DDEC, yo; rep from * once more, K4, yo, K2tog, yo, K3tog, K2. 30 sts.

Row 59: K2, Sl 1, K2tog, psso, yo, K1, *C4F, yo, DDEC, yo; rep from * once more, C4F,

Key

- Knit on RS, Purl on WS
- Purl on RS, Knit on WS
- Yarnover
- K2tog
- SSK
- DDEC
- KFB
- C4F
- Sl 1, k2tog, pssso
- K3tog
- Pattern repeat

Chart



K1, yo, K3tog, K2. 28 sts.

Row 61: K2, Sl 1, K2tog, pssso, yo, *K4, yo, DDEC, yo; rep from * once more, K4, yo, K3tog, K2. 26 sts.

Row 63: K2, Sl 1, K2tog, pssso, yo, K3, yo, DDEC, yo, C4F, yo, DDEC, yo, K3, yo, K3tog, K2. 24 sts.

Row 65: K2, Sl 1, K2tog, pssso, yo, K2, yo, DDEC, yo, K4, yo, DDEC, yo, K2, yo, K3tog, K2. 22 sts.

Row 67: K2, Sl 1, K2tog, pssso, yo, K1, yo, DDEC, yo, C4F, yo, DDEC, yo, K1, yo, K3tog, K2. 20 sts.

Row 69: K2, Sl 1, K2tog, pssso, yo, K1, SSK, yo, K4, yo, K2tog, K1, yo, K3tog, K2. 18 sts.

Row 71: K2, Sl 1, K2tog, pssso, yo, SSK, yo, C4F, yo, K2tog, yo, K3tog, K2. 16 sts.

Row 73: K2, Sl 1, K2tog, pssso, yo, K6, yo, K3tog, K2. 14 sts.

Row 75: K2, Sl 1, K2tog, pssso, yo, C4F, yo, K3tog, K2. 12 sts.

Row 77: K2, Sl 1, K2tog, pssso, yo, K2, yo, K3tog, K2. 10 sts.

Row 79: K2, Sl 1, K2tog, pssso, yo twice, K3tog, K2. 8 sts.

Row 80 (WS): K3, (K1, P1) into double yarnover of previous row, K3.

Row 81: K1, Sl 1, K2tog, pssso, K3tog, K1. 4 sts.

Row 82 (WS): K4.

Row 83: SSK, K2tog. 2 sts.

K2tog and fasten off.

Finishing

Weave in all ends, but do not trim.

Soak scarf in tepid water for around 20 minutes. Squeeze (but don't wring) excess water out, and press between towels to dry it further. Then spread the scarf out and pin to measurements, keeping sides as straight as possible. Allow to dry thoroughly then unpin, and trim ends.

US distributor of Fyberspates Scrumptious:



LANTERN MOON
7911 NE 33rd Drive,
Suite 140, Portland,
OR 97211, USA
Tel: 503 460 0003
Tel: 800 530 4170

www.lanternmoon.com

In association with:



Fyberspates Ltd
Lechlade, Gloucestershire,
GL7 3RB, United Kingdom
Tel: +44 (0)7540 656660

www.fyberspates.co.uk

Credits

Pattern Designer: Jeni Hewlett,
Fyberspates Ltd
Technical Editor: Jen Arnall-Culliford
Photography: Amanda France
Art and Production: Nic Blackmore

The entire contents of this leaflet and the pattern therein are subject to copyright. The purchase of this pattern allows you to use it for personal non-commercial purposes. Items produced using the directions in this pattern are not licensed to be sold for profit.

Copyright © 2011 Fyberspates Ltd
All rights reserved.